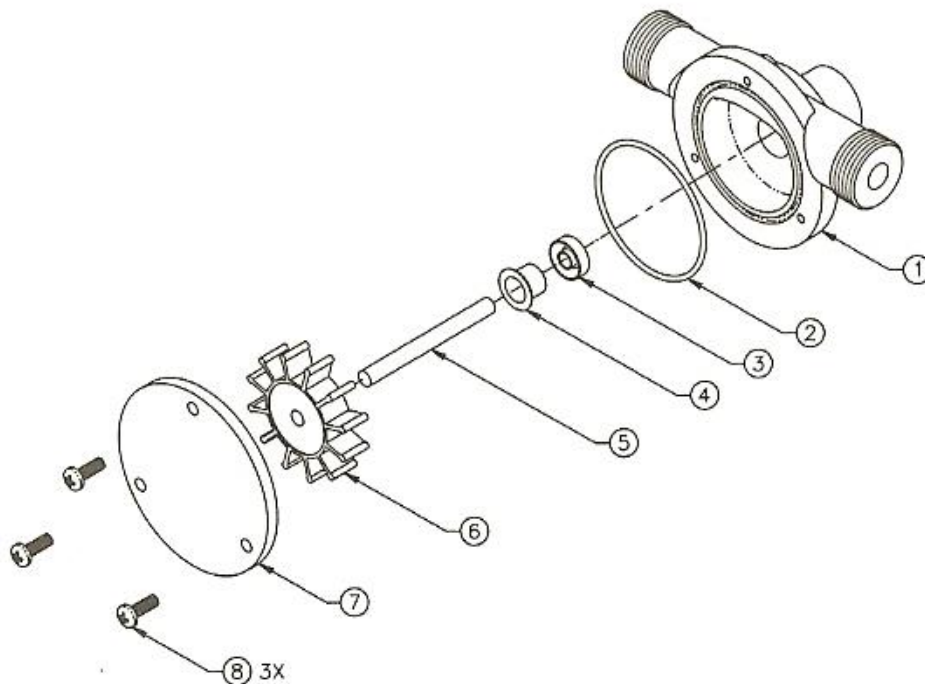


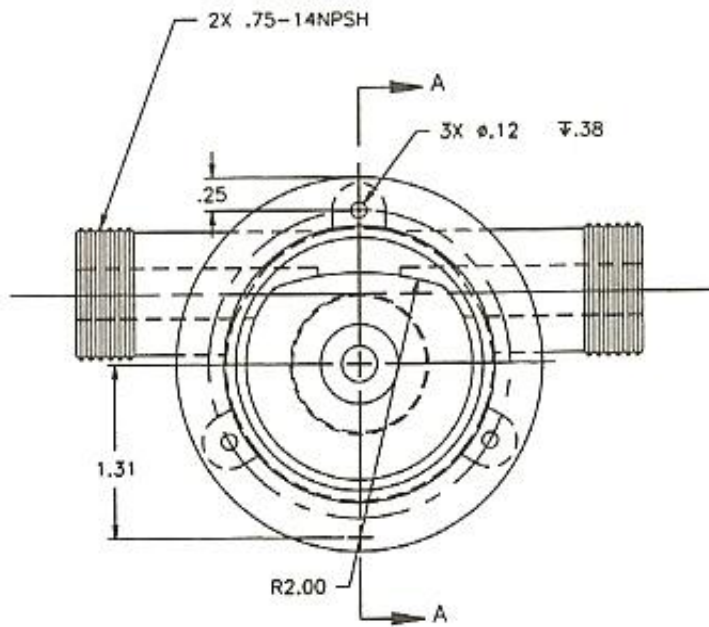
ITCD 315:001 - 3D Design Modeling & Animation
Dr. Rajeev Madhavannair
Lab Assignment 5 (Assembly): Due March 14th, 2011 (Start of Class)

Notes:

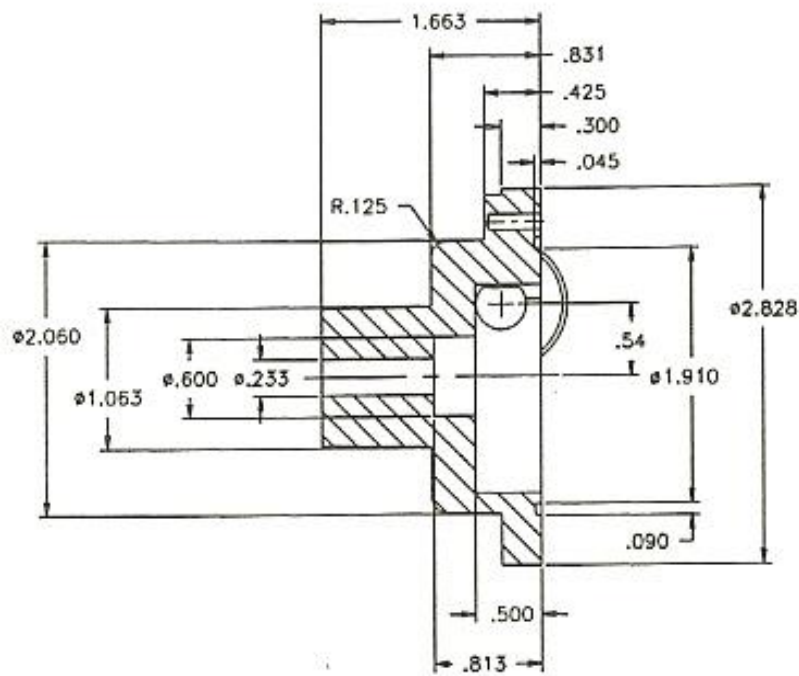
- Use Solidworks to sketch (Assembly drawings) the following examples in the required dimensions/units.
- Assignment is to be turned in as a hard/soft copy, use the template from Solidworks.
- Draw the **front, top and right side and isometric views** of each part fully dimensioned on a **drawing sheet (format)**. **Parts** should be on separate sheets. The drawing sheet should be on a template that has its title bar completely filled up with a Morehead State University logo and all details included. Isometric view needn't be dimensioned.
- Draw an **exploded isometric view with the balloons and BOM (bill of materials)** of the final assembly **just as you see** in the exploded view below. You don't need to dimension it. It should be in a Solidworks real part format (meaning not in the drawing format) and then it should be cut and paste into a word document. This exploded view should be printed out on a single page.
- Draw a **fully assembled isometric view** of the 'Drill Pump.' You don't need to dimension it. It should be in a Solidworks real part format (meaning not in the drawing format) and then it should be cut and paste into a word document. This fully assembled view should be printed out on a single page.



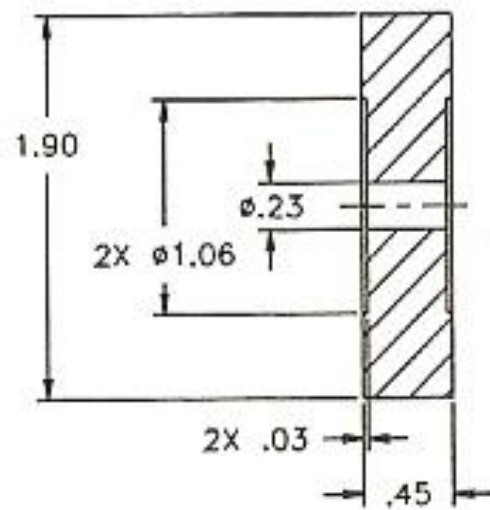
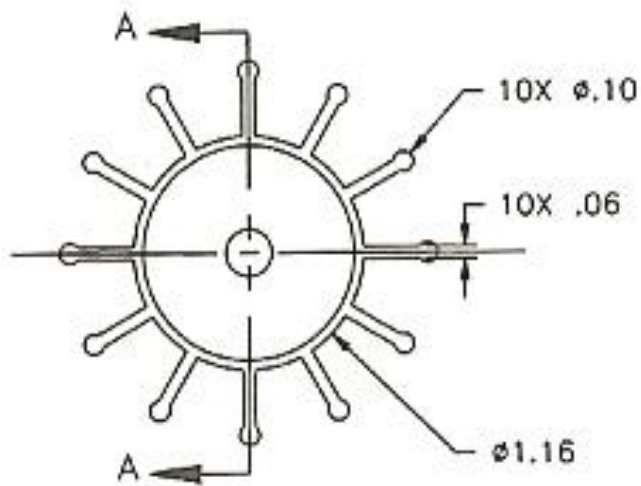
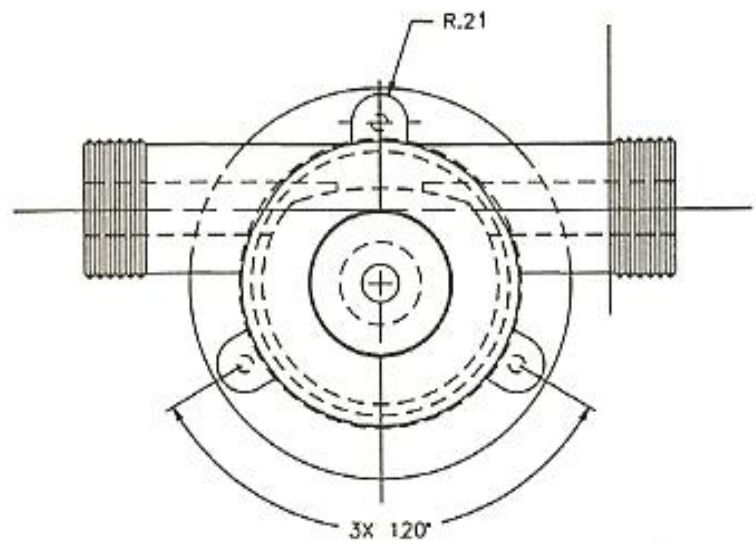
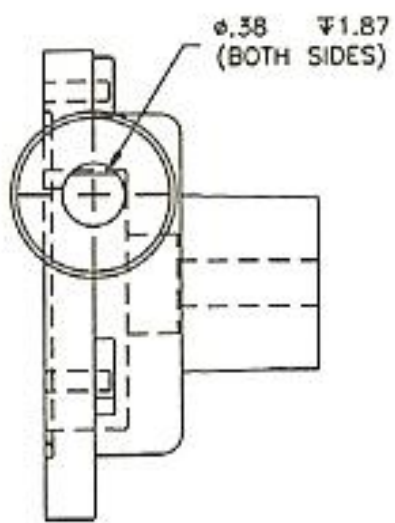
DRILL PUMP



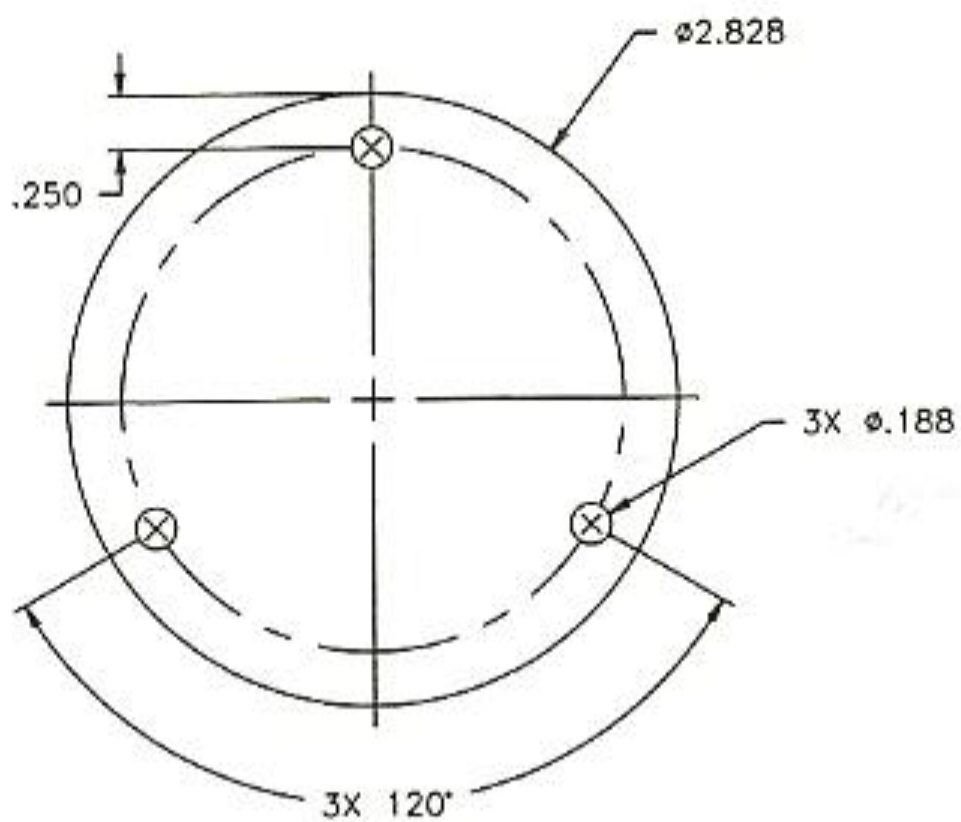
- ① PUMP HOUSING
 MATL: POLYAMIDE
 UNSPECIFIED FILLETS & ROUNDS: R.02
 DRAFT ANGLE 1°



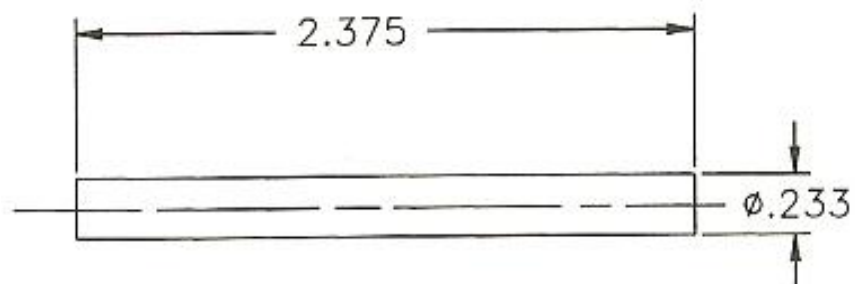
SECTION A-A



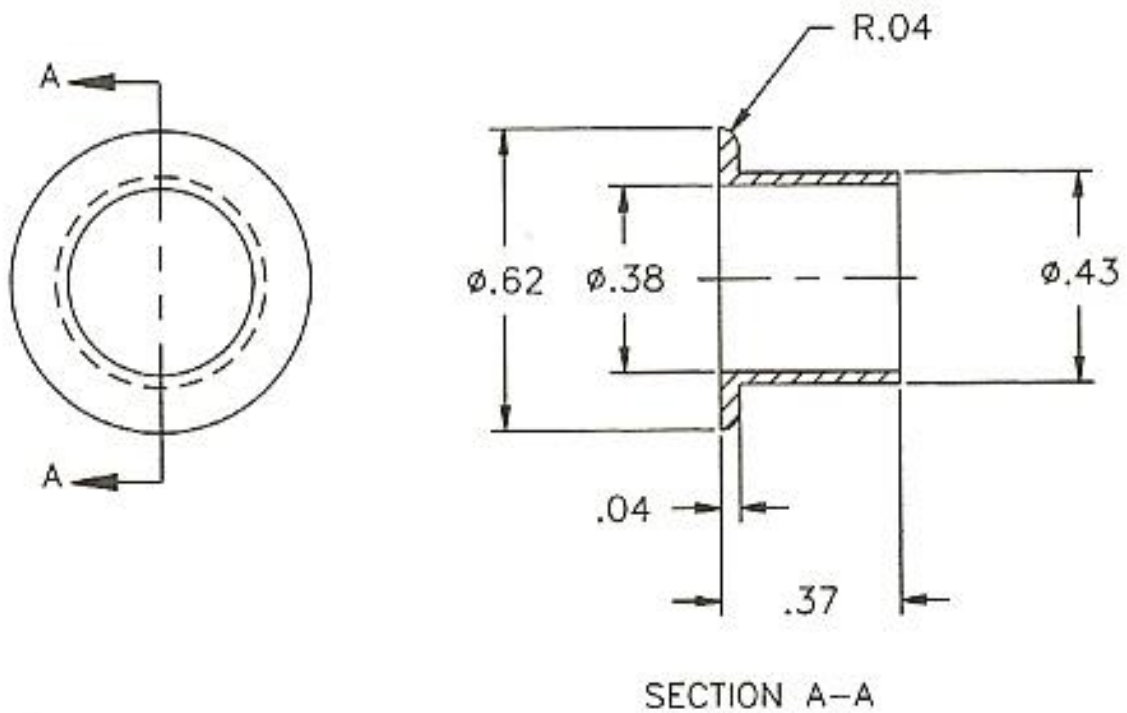
① RUBBER PADDLE WHEEL
MATL: POLYURETHANE



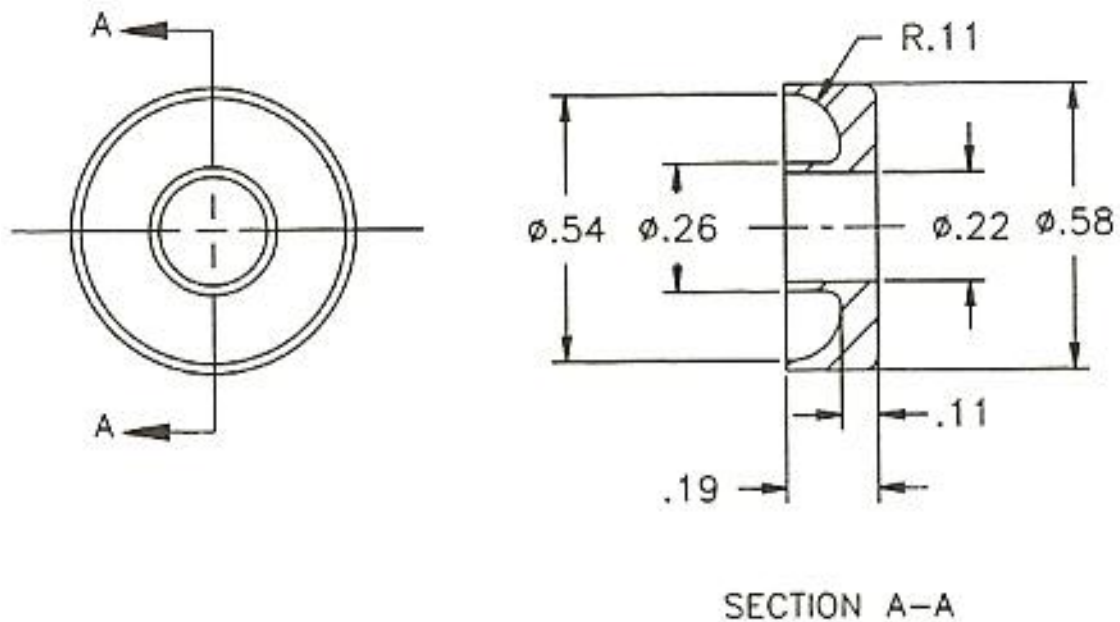
⑦ COVER
MATL: POLYAMIDE



⑤ SHAFT
MATL: AISI 302



④ BUSHING
MATL: POLYAMIDE



③ SEAL
MATL: POLYURETHANE
UNSPECIFIED FILLETS & ROUNDS: R.03

DRILL PUMP BILL OF MATERIALS

ITEM	QTY	DESCRIPTION
1	1	PUMP HOUSING
2	1	.070 O-RING, Ø2.00
3	1	SEAL
4	1	PLASTIC BUSHING
5	1	SHAFT
6	1	PADDLE WHEEL
7	1	COVER
8	3	1/8" X 5/8" LONG PAN HEAD SCREW, THREAD CUTTING